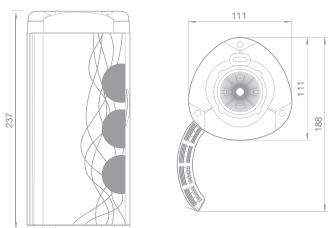


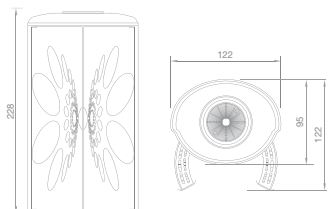
X SUN



Technical data	Caratteristiche tecniche	54/160 W	54/180 W	54/200 W
Absorbed power	Potenza assorbita	9 ***	10 ***	11.2 ***
Rated voltage	Tensione nominale	400V 3 N-*	400V 3 N-*	400V 3N-*
Frequency	Frequenza	50/60 Hz	50/60 Hz	50/60 Hz
Ventilation air flow rate	Portata aria ventilazione	5700 m³/h	5700 m³/h	5700 m³/h
Lamps	Lampade	54/160W	54/180W	54/200W
Weight	Peso	248 Kg	248 Kg	248 Kg
External dimensions	Dimensioni esterne	cm 111 x 188 x 237h*	cm 111 x 188 x 237h*	cm 111 x 188 x 237h*

*Whit the open door

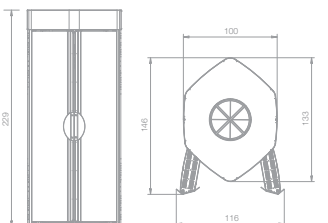
K SUN



Technical data	Caratteristiche tecniche	42/160 W	42/180 W	42/200 W	48/180 W	48/200 W
Absorbed power	Potenza assorbita	7.1 ***	7.9 ***	8.8 ***	9 ***	10 ***
Rated voltage	Tensione nominale	400V 3N-*	400V 3N-*	400V 3N-*	400V 3N-*	400V 3N-*
Frequency	Frequenza	50/60 Hz	50/60 Hz	50/60 Hz	50/60 Hz	50/60 Hz
Ventilation air flow rate	Portata aria ventilazione	4235 m³/h	4235 m³/h	4235 m³/h	4235 m³/h	4235 m³/h
Lamps	Lampade	42/160 W	42/180 W	42/200 W	48/180 W	48/200 W
Weight	Peso	215 Kg	215 Kg	215 Kg	220 Kg	220 Kg
External dimensions	Dimensioni esterne	cm 122 x 122 x 228h*	cm 122 x 122 x 228h*	cm 122 x 122 x 228h*	cm 122 x 122 x 228h*	cm 122 x 122 x 228h*

*Whit the open door

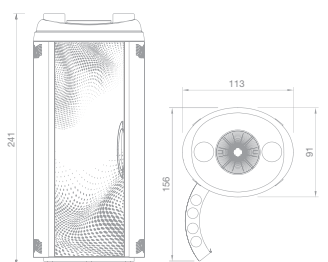
SIX SUN



Technical data	Caratteristiche tecniche	48/180 W	48/180 W
Absorbed power	Potenza assorbita	9 ***	10 ***
Rated voltage	Tensione nominale	400V 3N-*	400V 3N-*
Frequency	Frequenza	50/60 Hz	50/60 Hz
Air flow rate fan lamps	Portata aria ventilazione lampade	860 m³/h	860 m³/h
Air flow rate fan body	Portata aria ventilazione corpo	4235 m³/h	4235 m³/h
Lamps	Lampade	48/180 W	48/200 W
Weight	Peso	256 Kg	256 Kg
External dimensions	Dimensione esterna	cm 100 x 133 x 229h*	cm 100 x 133 x 229h*

*Whit the open door

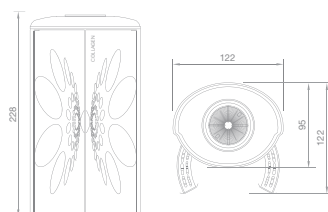
STYLE



Technical data	Caratteristiche tecniche	52/160 W	52/180 W	52/200 W
Absorbed power	Potenza assorbita	8.7 ***	9.5 ***	10.9 ***
Rated voltage	Tensione nominale	400V 3N-*	400V 3N-*	400V 3N-*
Frequency	Frequenza	50/60 Hz	50/60 Hz	50/60 Hz
Air flow rate fan lamps	Portata aria ventilazione lampade	850 m³/h	850 m³/h	850 m³/h
Air flow rate fan body	Portata aria ventilazione corpo	4235 m³/h	4235 m³/h	4235 m³/h
Lamps	Lampade	52/160 W	52/180 W	52/200 W
Weight	Peso	208 Kg	208 Kg	208 Kg
External dimensions	Dimensione esterna	cm 113x156x241h*	cm 113x156x241h*	cm 113x156x241h*

*Whit the open door

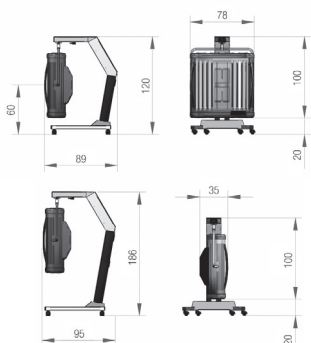
COLLAGEN



Technical data	Caratteristiche tecniche	COLLAGEN 42/180W
Absorbed power	Potenza assorbita	7,9 kW
Rated voltage	Tensione nominale	400V 3N-*
Frequency	Frequenza	50/60 Hz
Air flow rate fan	Portata aria ventilazione	4235 m³/h
Lamps	Lampade	42/180W Collagen
Weight	Peso	215 Kg
External dimensions	Dimensioni esterne	cm 122x122x228h*

*Whit the open door

BEAUTY COLLAGEN



Technical data	Caratteristiche tecniche	BEAUTY COLLAGEN
Absorbed power	Potenza assorbita	1.05 kW
Rated voltage	Tensione nominale	230V -
Frequency	Frequenza	50Hz
Air flow rate fan lamps	Portata aria	354/420 m³/h
High pressure collagen lamps	Lampade Collagen alta pressione	2x200W R7s
Low pressure collagen lamps	Lampade Collagen bassa pressione	8x40W + 8x25W
Weight	Peso	70 Kg
External measurements with the screen raised	Dimensioni esterne con schermo alzato	cm 78 x 95 x 186 h
External measurements with the screen lowered	Dimensioni esterne con schermo abbassato	cm 78 x 89 x 120 h

* On request, models can be fitted with 230V - or 230V 3N - power
A richiesta i modelli possono essere alimentati a 230V - o 230V 3N -

*** The data may vary when using the IP system
*** Il dato può variare nel caso di utilizzo del sistema IP